

# EPOS

ADAPT 300 Series

## Battery Removal Guide



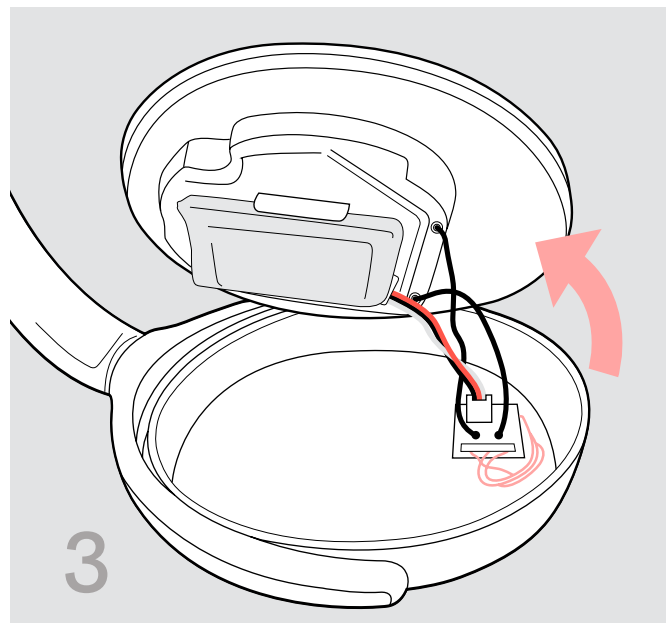
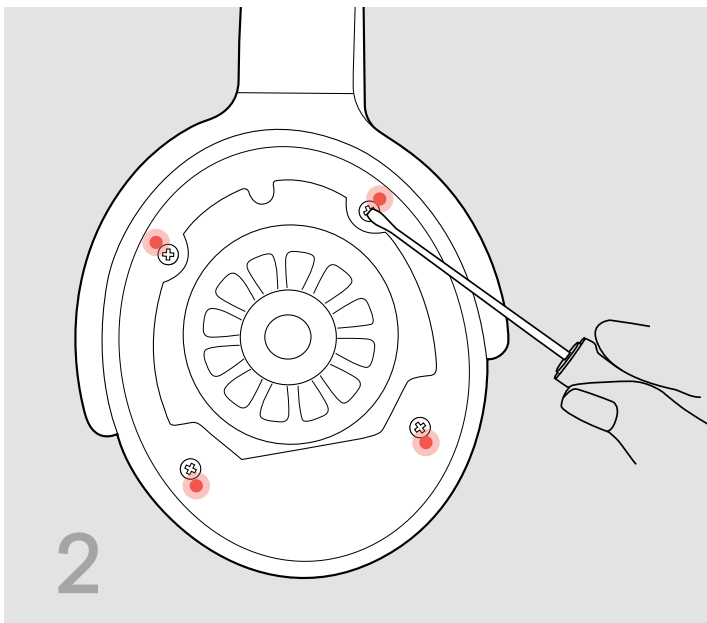
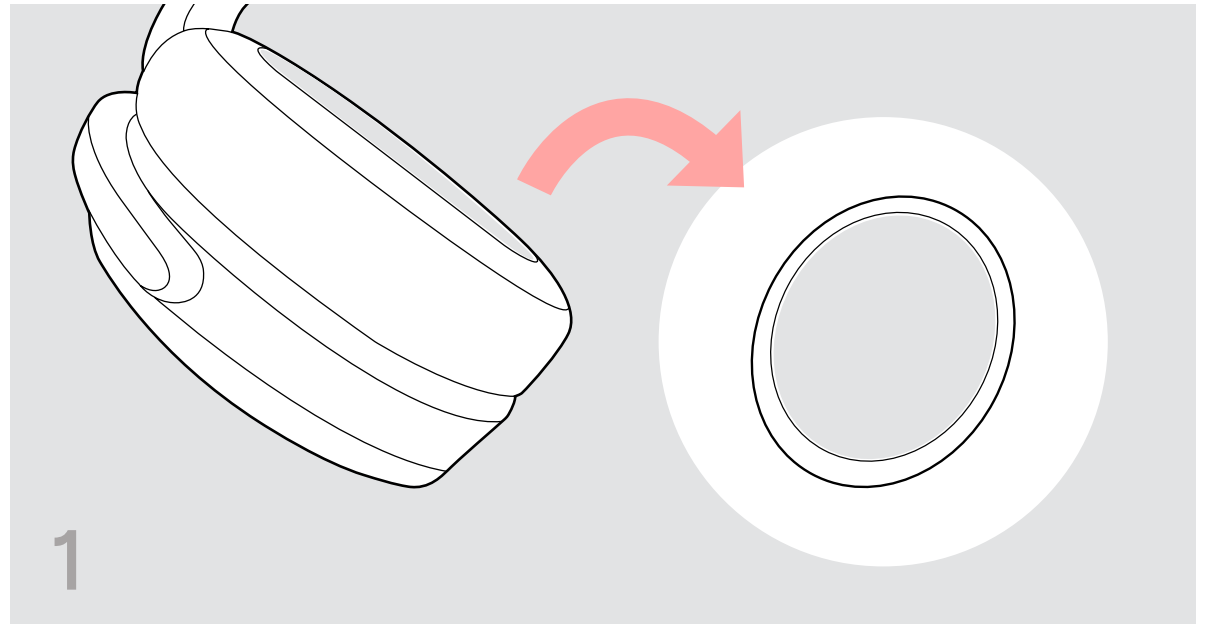
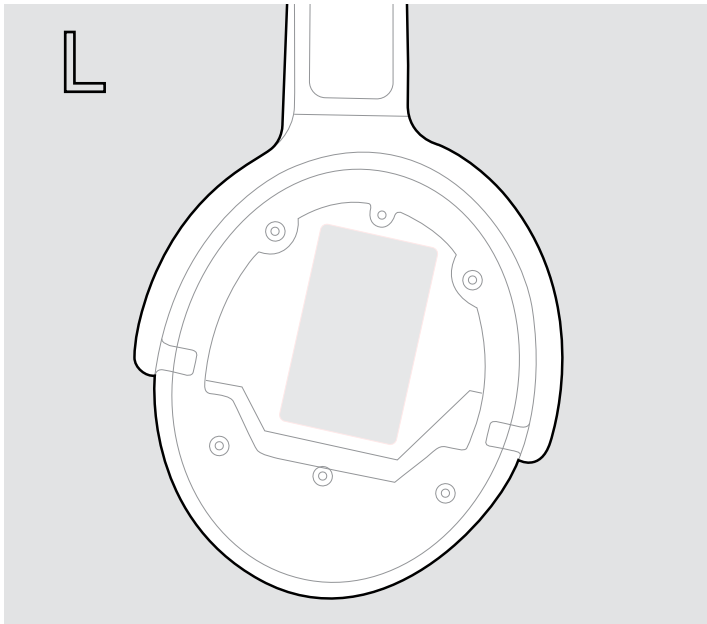
DSEA A/S

Kongebakken 9, DK-2765 Smørum, Denmark  
[www.eposaudio.com](http://www.eposaudio.com)

Publ. 04/22, A02

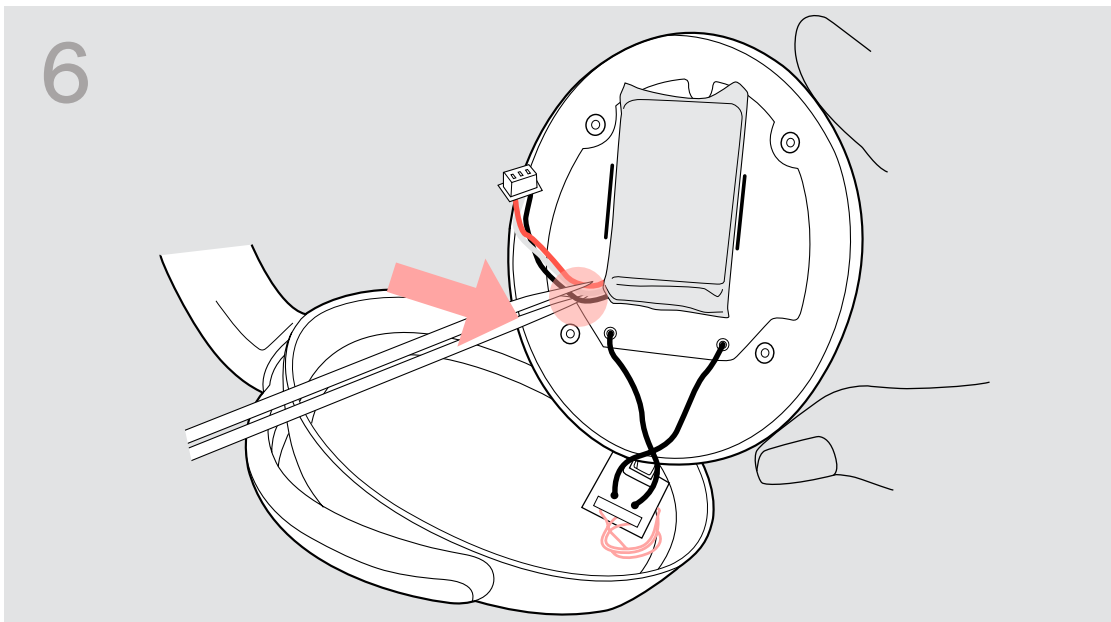
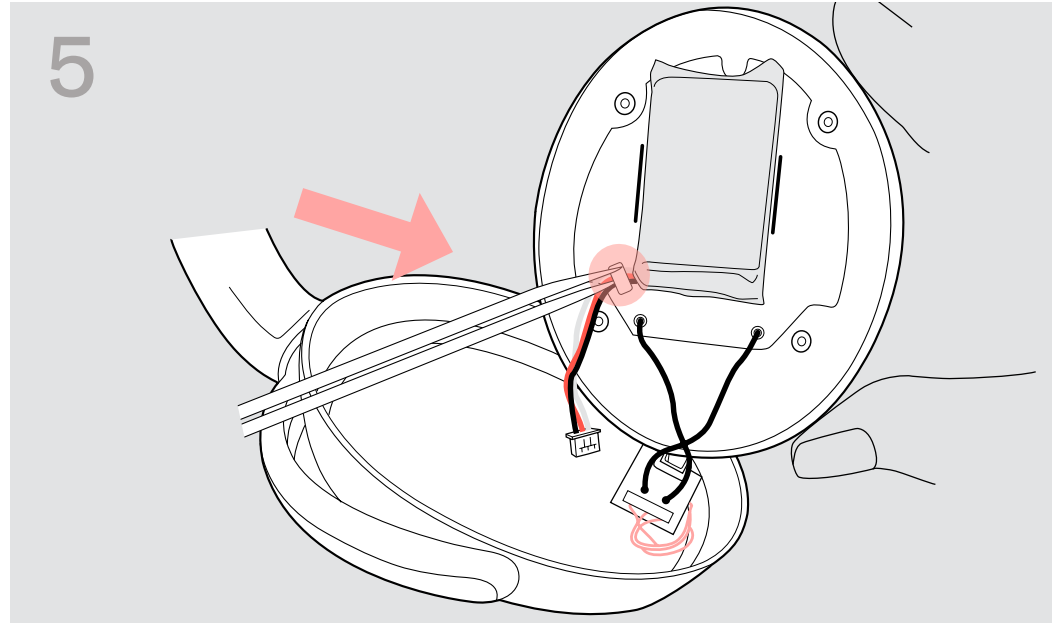
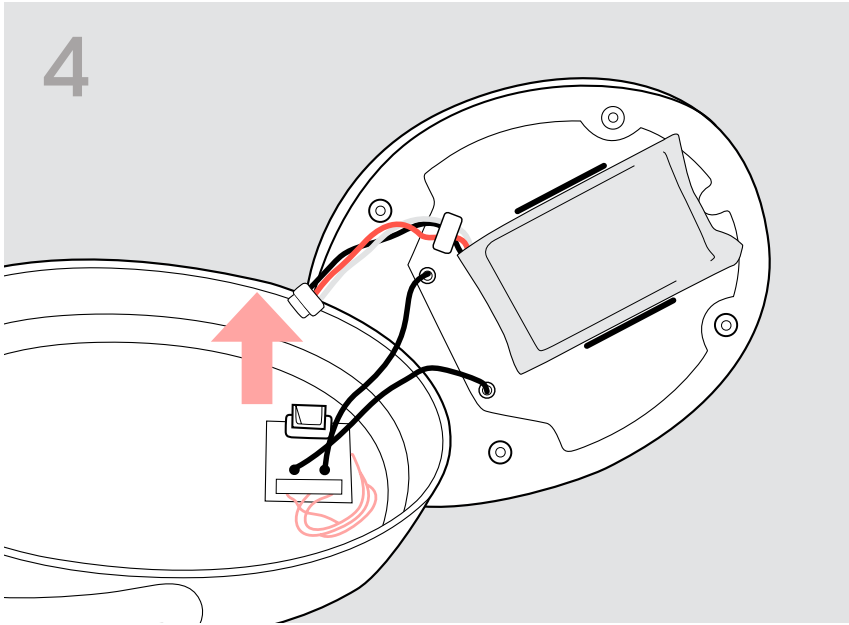
THE POWER OF AUDIO

# Battery Removal Guide



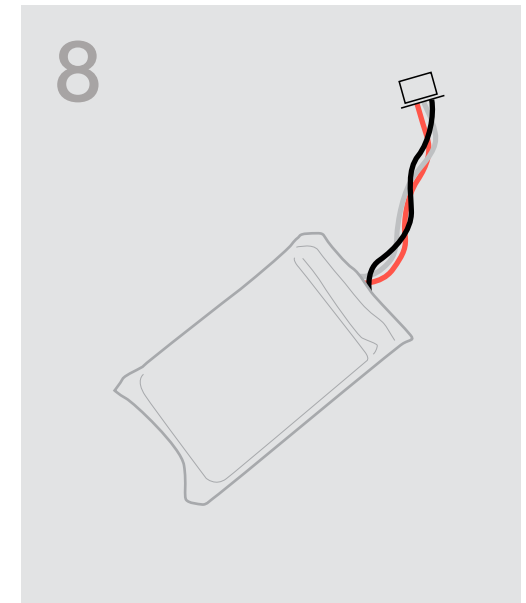
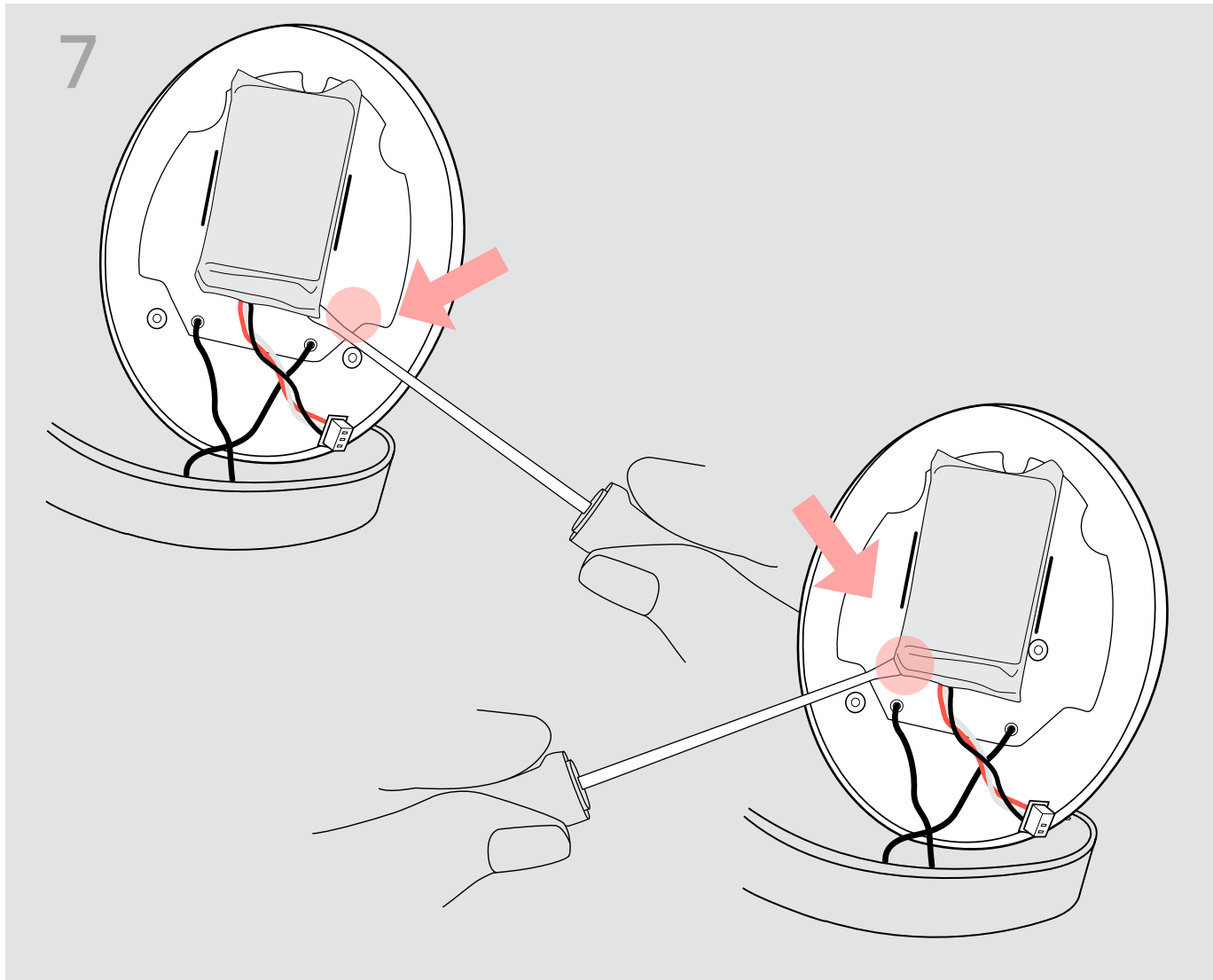
1. Remove the ear pad from the left ear cup (L marking on the headband).
2. Remove the 4 screws with a screwdriver.
3. Lift the cover on the left-hand side.

# Battery Removal Guide



4. Unplug the connector of the rechargeable battery.
5. Pull out the cable holder e.g. with a pair of tweezers.
6. Release the cables from the lower cable holder.

# Battery Removal Guide



7. Carefully slide a small screwdriver under the two battery corners to loosen the rechargeable battery.
8. Remove the rechargeable battery.